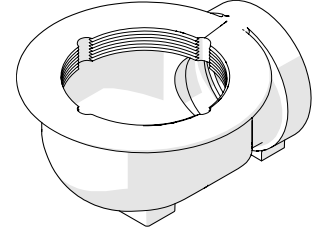


CI Floor Drain Balcony Body 80BSP x 54 Poly Pipe Outlet with 6mm O Ring (UK)



PRODUCT CODE:

- DGAV03(302104PUK)

SPECIFICATIONS

- Slim line design
- Weep holes
- Epoxy coated
- Made from Grey Cast Iron, grade ISO 185/JL/100 to AS1830
- Slim line design ideal for thin slabs such as balconies and multi-story applications
- Built in Weep holes
- Sealed via rubber ring (O ring)
- Black Epoxy Coated (Electrophoretic Coating) for corrosion resistance

WARNINGS: Special attention to be paid on notes, photos, images, or drawings of assembly steps marked with the warning symbol.

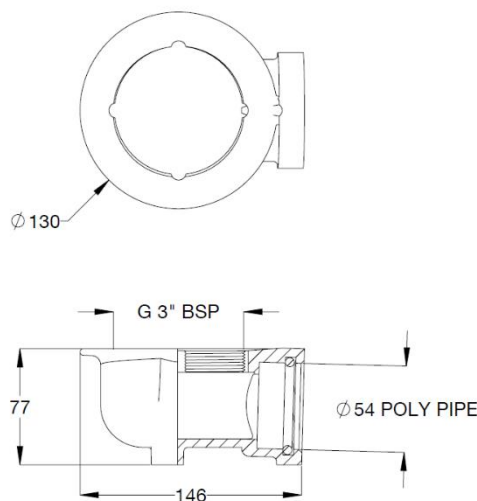


TECHNICAL DATA

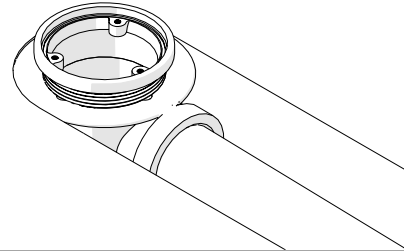
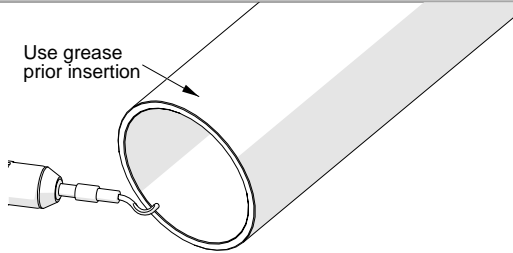
Drain Inlet	3" BSP
Outlet	Ø54mm Pipe
To Suit Drain	DGAV02-BSP (303070X)
Finish	Black Epoxy Coated

NOTE: Galvin Specialised continually strive to improve their products. Specifications may change without notice.

PRE-INSTALLATION - DIMENSIONS



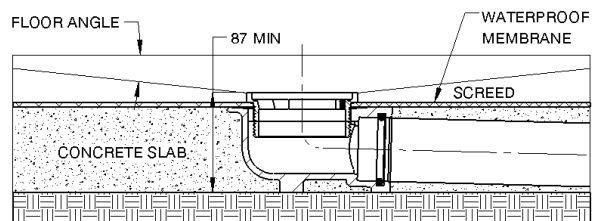
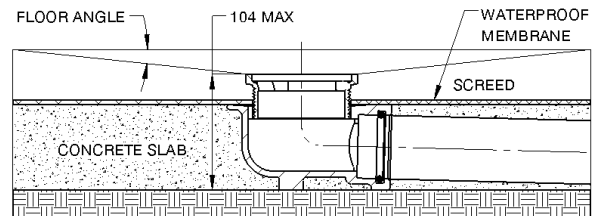
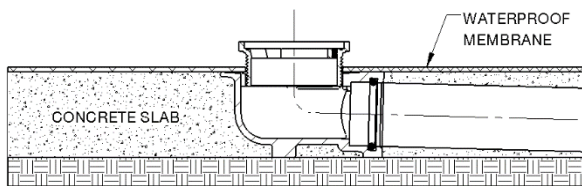
SITWORK INSTALLATION GUIDELINE FOR DGAV03



1. Prior to installation, deburr pipe edges (internal and external) and apply grease at the end to aid in insertion.

2. When casting in the body, ensure that the body is fully supported and set to levels required.

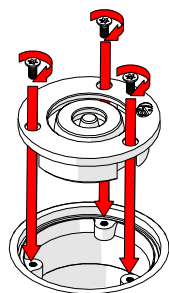
TYPICAL INSTALLATION WITH DGAV02-BSP (SOLD SEPERATELY)



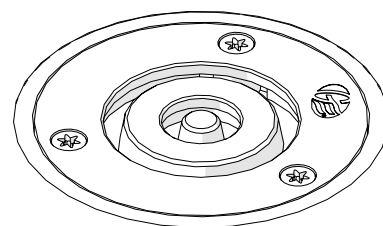
1. Connect the vinyl threaded body (not supplied) to the cast iron body and adjust the height to the required FFL.

Note: Allow space for waterproof membrane

2. Lay screed to falls. Allow for the thickness of tiles or floor covering when setting floor levels.
3. Apply finish flooring.



4. Secure grating as shown (not supplied).



5. Once fully assembled, check if water flows.

TROUBLESHOOTING		
PROBLEM	CAUSE	RECTIFICATION
Water is not flowing	<ul style="list-style-type: none"> - Body contains debris or damage - Grate contains debris or damage 	<ul style="list-style-type: none"> - Body must be clean and free from debris. - Grate must be clean and free from debris.

WARRANTY

Galvin Engineering products are covered under our Manufacturer's Warranty. Galvin Engineering products must be installed in accordance with the installation instructions and in accordance with AS 3500 and NCC Volume Three, relevant Australian Standards and local authorities applicable to product being installed. Water and electrical supply conditions must also comply to the applicable national and/or state standards, failing to comply with these provisions may void the product warranty and affect performance of the product.

Please visit www.galvinengineering.com.au to view the full warranty, our Installation Compliance and Maintenance & Cleaning information as well as any other additional information.

Supplied throughout Europe
and the UK by
Wallgate Ltd.

Crow Lane, Wilton,
Salisbury, Wiltshire
SP2 0HB, England
P: +44 (0) 1722 744594
F: +44 (0) 1722 742096
E: sales@wallgate.com

Within Australia: **1300 514 074** Outside Australia: P: **+61 (0)8 9338 2344**

F: +61 (0)8 9338 2340

sales@galvinengineering.com.au

www.galvinengineering.com.au

ABN: 78 008 719 382

PERTH | SYDNEY | MELBOURNE | BRISBANE | ADELAIDE

